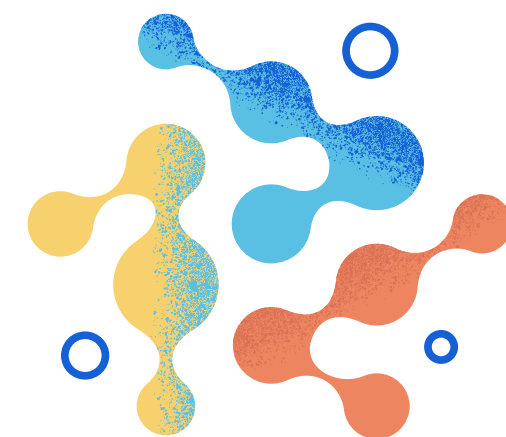


HGCSC



Science Department Assessment Summary

Pupils will be assessed in many different ways throughout their Science education. These methods are summarised below



Day-to-day Formative Assessments

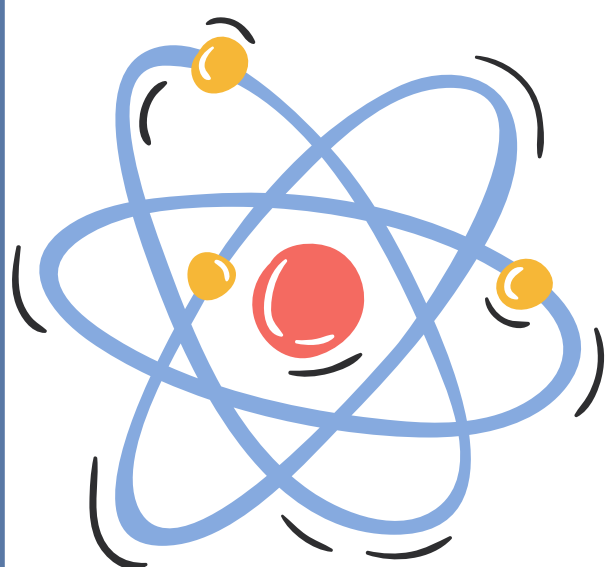
- Retrieval activity at the start of every lesson in every year which are self-assessed via modelling
- Live Feedback is used in every lesson for every pupil to address misconceptions and allow pupils to develop their knowledge
- Every lesson has an exam question at some point to check deeper learning
- Cold call questioning is used to check pupil understanding during teaching



Medium Term Summative Assessments

KS3

- End of each half term, pupils are assessed on different aspects of their personal development through different activities. E.g Write an article, deliver a presentation, complete a practical etc
- Exam assessments are used at Christmas and July to test for knowledge development (Around 40 marks)



KS4

- Mini assessments are completed at the end of each topic to check for knowledge development within the topic
- Exam assessment is used at the end of the school year to check of overall knowledge (Around 60 – 70 marks)

Final End of Course Summative Assessments

- End of Year 11 all pupils sit their GCSE exams.
- Triple pupils complete 9hr 30mins of exams in total and Combined complete 7hr 30mins

